

INTERNATIONAL TRADE PRICE INDEXES

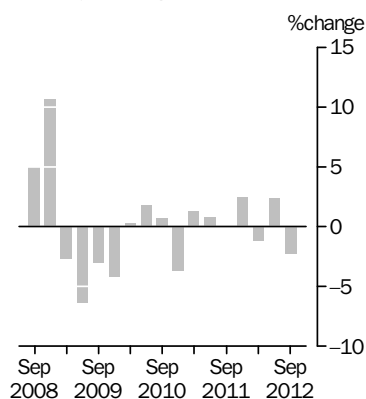
AUSTRALIA

EMBARGO: 11.30AM (CANBERRA TIME) THURS 1 NOV 2012

Note:
New index reference
period: 2011-12=100.0
See page 2.

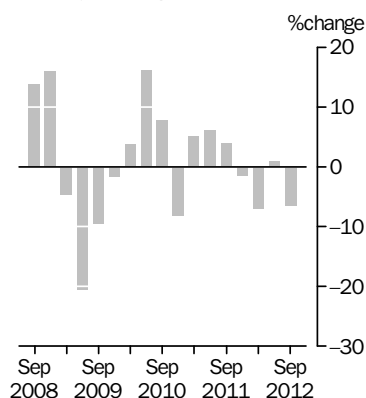
IMPORT PRICE INDEX: all groups

Quarterly % change



EXPORT PRICE INDEX: all groups

Quarterly % change



KEY FIGURES

	Jun Qtr 12 to Sep Qtr 12 % change	Sep Qtr 11 to Sep Qtr 12 % change
Import Price Index all groups	-2.4	1.2
Food and live animals	-1.9	1.9
Beverages and tobacco	-4.6	-4.3
Crude materials, inedible, except fuels	-3.7	-5.3
Mineral fuels, lubricants and related materials	-9.1	0.8
Animal and vegetable oils, fats and waxes	-4.6	-13.3
Chemicals and related products, n.e.s.	-1.7	-0.1
Manufactured goods classified chiefly by material	-1.3	0.4
Machinery and transport equipment	-0.8	1.0
Miscellaneous manufactured articles	-0.9	4.2
Commodities and transactions, n.e.s.	-0.3	-1.5
Export Price Index all groups	-6.4	-13.4
Food and live animals	-0.3	-5.0
Beverages and tobacco	4.7	4.9
Crude materials, inedible, except fuels	-11.7	-23.0
Mineral fuels, lubricants and related materials	-5.8	-12.0
Animal and vegetable oils, fats and waxes	-4.9	-11.4
Chemicals and related products, n.e.s.	0.2	5.2
Manufactured goods classified chiefly by material	-4.4	-13.5
Machinery and transport equipment	-1.9	1.6
Miscellaneous manufactured articles	-2.7	-4.7
Commodities and transactions, n.e.s.	-0.3	-3.8

KEY POINTS

IMPORT PRICE INDEX

- The Import Price Index fell 2.4% in the September quarter 2012. Through the year to the September quarter 2012, the Import Price Index rose 1.2%.

EXPORT PRICE INDEX

- The Export Price Index fell 6.4% in the September quarter 2012. Through the year to the September quarter 2012, the Export Price Index fell 13.4%.

INQUIRIES

For further information about these and related statistics, contact the National Information and Referral Service on 1300 135 070.

NOTES

FORTHCOMING ISSUES

ISSUE (Quarter)	RELEASE DATE
December 2012	31 January 2013
March 2013	2 May 2013
June 2013	1 August 2013
September 2013	31 October 2013

.....

REVIEW OF THE PRODUCER AND INTERNATIONAL TRADE PRICE INDEXES

The ABS published the outcomes from a major review of the Producer and International Trade Price Indexes on 6 March 2012. More information on the review can be found in *Information Paper: Outcome of the Review of the Producer and International Trade Price Indexes, 2012* (cat. no. 6427.0.55.004).

Details relating to the implementation of the outcomes of the review can be found in *Information Paper: Implementation of the Review of the Producer and International Trade Price Indexes, 2012* (cat. no. 6427.0.55.005), released on 28 September 2012.

CHANGES IN THIS ISSUES

Both the Import Price Index and the Export Price Index data have been reweighted for the September quarter 2012. This is in line with the ABS policy of reweighting these indexes annually for the September quarter, as explained in paragraphs 8–10 of the Explanatory Notes. The new weighting patterns are provided in Appendix 1 of this issue. As a consequence of the annual reweighting, the points contribution data for the June quarter 2012 shown in Tables 2, 8 and 17 differ from that published in the previous issue of this publication.

From the September quarter 2012, all index numbers are calculated on a new index reference period of 2011–12 = 100.0. Period-to-period percentage changes may differ slightly to those previously published due to rounding and the re-referencing. These differences do not constitute a revision. Re-referencing conversion factors are available from the ABS website in Table 20 of the 'Downloads' tab of this issue. Further information on re-referencing can be found in Appendix 2 of this issue and in Chapter 12 of *Producer and International Trade Price Indexes: Concepts, Sources and Methods, 2006* (cat. no. 6429.0).

ROUNDING

Any discrepancies between totals and sums of components are due to rounding.

DATA REFERENCES

Data referenced in the Key Points and Commentary are available from the tables shown in this publication, or in the corresponding tables of this publication on the ABS website <<http://www.abs.gov.au>>.

Brian Pink
Australian Statistician

INTRODUCTION OF CARBON PRICING

INTRODUCTION OF CARBON PRICING

On 1 July 2012, the Australian Government introduced a \$23 per tonne carbon price on greenhouse emissions, to be paid directly by Australia's largest greenhouse gas emitting companies, together with compensation and incentive packages. Carbon pricing changes the relative prices of high and low emission-intensive goods. The extent that any carbon costs translate into general increases in prices depends on a range of factors. Carbon pricing will be occurring at the same time as normal variations in prices are occurring driven by productivity, the terms of trade or changing preferences. The extent to which businesses pass on the carbon price will depend on their consideration of issues such as operating costs, margins, and other economic factors (such as degree of competition).

The Australian Bureau of Statistics (ABS) released an information paper '*Recording emissions reduction schemes in ABS statistics*' (cat. no. 5257.0.55.001) on 30 July 2012. This information paper summarises the nature of emissions permits measures introduced under the Clean Energy Act 2011, and how the ABS expects to include estimates of various carbon credit schemes in economic and environment statistics, commencing with the September quarter 2012.

The ABS will not be able to quantify the impact of carbon pricing, compensation or other government incentives and will not be producing estimates of price change exclusive of the carbon price or measuring the impact of the carbon price. Any changes in the prices charged by companies for their outputs, paid by companies for their inputs or paid by consumers, will be reflected in the suite of price indexes compiled and published by the ABS. Further information on the expected impacts of the introduction of carbon pricing is available in the publication *Strong Growth, Low Pollution - Modelling a Carbon Price* (The Treasury, 2011).

COMMENTARY

IMPORT PRICE INDEX

The Import Price Index fell 2.4% in the September quarter 2012. This decrease was driven mainly by falls in the prices paid for petroleum, petroleum products and related materials (-10.0%), machinery specialised for particular industries (-4.0%) and medicinal and pharmaceutical products (-3.3%). The appreciation of the Australian dollar against all of our major trading currencies contributed to this decrease. These decreases were partly offset by rises in the prices paid for professional, scientific, and controlling instruments and apparatus, n.e.s. (+2.2%).

Through the year to the September quarter 2012, the Import Price Index rose 1.2%. This increase was driven mainly by rises in the prices paid for manufactures of metals, n.e.s. (+7.3%) and chemical materials and products, n.e.s. (+18.8%). Partly offsetting these through the year rises were falls in the prices paid for medicinal and pharmaceutical products (-6.5%), non-ferrous metals (-11.8%) and fertilisers (excluding crude) (-12.1%).

EXPORT PRICE INDEX

The Export Price Index fell 6.4% in the September quarter 2012. This decrease was driven mainly by falls in the prices received for metalliferous ores and metal scrap (-12.1%), coal, coke and briquettes (-6.1%), petroleum, petroleum products and related materials (-9.6%), and textile fibre and their waste (-15.8%). These decreases were partly offset by rises in the prices received for inorganic chemicals (+18.1%).

Through the year to the September quarter 2012, the Export Price Index fell 13.4%. This decrease was driven mainly by falls in the prices received for metalliferous ores and metal scrap (-23.9%), coal, coke and briquettes (-18.6%), non-ferrous metals (-19.5%), textiles (-25.7%), cereals and cereal preparations (-15.2%) and petroleum, petroleum products and related materials (-7.1%). Partly offsetting these through the year falls were rises in the prices received for gas, natural and manufactured (+7.8%), medicinal and pharmaceutical products (+7.0%), meat and meat preparations (+3.7%) and vegetables and fruit (+9.2%).

LIST OF TABLES

page

INTERNATIONAL TRADE PRICE INDEXES

1	Import price index: All groups, index numbers and percentage changes	6
2	Import price index: SITC contribution to all groups index	7
3	Import price index: Selected SITC sections	9
4	Import price index: Consumption goods, balance of payments broad economic categories	10
5	Import price index: Capital goods, balance of payments broad economic categories	11
6	Import price index: Intermediate and other merchandise goods, balance of payments broad economic categories	12
7	Export price index: All groups, index numbers and percentage changes	14
8	Export price index: SITC contribution to all groups index	15
9	Export price index: Selected SITC sections	17
10	Export price index: Rural goods, balance of payments classification of exports	18
11	Export price index: Non-rural goods, balance of payments classification of exports	19

ADDITIONAL TABLES AVAILABLE ON ABS WEBSITE

12	Import price index, by selected SITC division	
13	Import price index, by selected HTISC section	
14	Import price index, by selected ANZSIC industry of origin division	
15	Import price index, by selected ANZSIC industry of origin subdivision	
16	Import price index, by BEC category	
17	Export price index, AHECC and ANZSIC contribution to all groups index	
18	Export price index, by selected AHECC section	
19	Export price index, by selected ANZSIC industry of origin division and subdivision	
20	Conversion Factors, from index reference period 1989–90 to 2011–12	

APPENDIXES

1	Index structures and weighting patterns	24
2	Re-referencing the International Trade Price Indexes	29

IMPORT PRICE INDEX(a): All groups, index numbers and percentage changes

<i>Period</i>	<i>Index numbers</i>	<i>% change from previous period</i>	<i>% change from corresponding quarter of previous year</i>
2008-09	108.7	12.8	..
2009-10	98.7	-9.2	..
2010-11	97.9	-0.8	..
2011-12	100.0	2.1	..
2007			
December	94.8	0.2	-2.3
2008			
March	97.4	2.7	2.2
June	98.8	1.4	3.6
September	103.7	5.0	9.6
December	114.8	10.7	21.1
2009			
March	111.7	-2.7	14.7
June	104.5	-6.4	5.8
September	101.3	-3.1	-2.3
December	97.0	-4.2	-15.5
2010			
March	97.3	0.3	-12.9
June	99.1	1.8	-5.2
September	99.8	0.7	-1.5
December	96.1	-3.7	-0.9
2011			
March	97.4	1.4	0.1
June	98.2	0.8	-0.9
September	98.2	0.0	-1.6
December	100.6	2.4	4.7
2012			
March	99.4	-1.2	2.1
June	101.8	2.4	3.7
September	99.4	-2.4	1.2

.. not applicable

(a) Index reference period: 2011-12 = 100.0.

IMPORT PRICE INDEX(a), SITC contribution to all groups index

Category	POINTS CONTRIBUTION TO ALL GROUPS		CHANGE TO POINTS CONTRIBUTION
	Jun Qtr 2012(b)	Sep Qtr 2012	Jun Qtr 2012 to Sep Qtr 2012
ALL GROUPS			
All groups	101.8	99.4	-2.4
SITC SECTIONS			
0 Food and live animals	4.11	4.03	-0.08
1 Beverages and tobacco	0.85	0.81	-0.04
2 Crude materials, inedible, except fuels	1.17	1.13	-0.04
3 Mineral fuels, lubricants and related materials	16.78	15.26	-1.52
4 Animal and vegetable oils, fats and waxes	0.25	0.24	-0.01
5 Chemicals and related products, n.e.s.	10.98	10.80	-0.18
6 Manufactured goods classified chiefly by material	11.38	11.25	-0.13
7 Machinery and transport equipment	41.64	41.31	-0.33
8 Miscellaneous manufactured articles	11.67	11.57	-0.10
9 Commodities and transactions, n.e.s.	2.97	2.96	-0.01

(a) Index reference period: 2011-12 = 100.0.

(b) Differs from previously published June quarter 2012 due to the annual reweighting.

Category	POINTS CONTRIBUTION TO ALL GROUPS		CHANGE TO POINTS CONTRIBUTION
	Jun Qtr 2012(b)	Sep Qtr 2012	Jun Qtr 2012 to Sep Qtr 2012
SITC DIVISIONS			
02 Dairy products and eggs	0.31	0.30	-0.01
03 Fish, crustaceans, molluscs and aquatic invertebrates and preparations thereof	0.59	0.58	-0.01
05 Vegetables, fruit and nuts	0.84	0.81	-0.03
07 Coffee, tea cocoa	0.63	0.61	-0.02
09 Misc edible products	0.78	0.78	0.00
11 Beverages	0.74	0.71	-0.03
12 Tobacco	0.11	0.10	-0.01
23 Crude rubber	0.07	0.06	-0.01
24 Cork and wood	0.29	0.28	-0.01
25 Pulp and Waste Paper	0.08	0.07	-0.01
26 Textile Fibres and Wastes	0.04	0.04	0.00
27 Crude fertilizers and minerals	0.12	0.12	0.00
33 Petroleum, petroleum products and related materials	15.64	14.07	-1.57
42 Fixed vegetable fats and oils	0.20	0.19	-0.01
51 Organic chemicals	1.27	1.21	-0.06
52 Inorganic chemicals	0.70	0.69	-0.01
53 Dyeing and colouring materials	0.27	0.26	-0.01
54 Medicinal products	4.85	4.69	-0.16
55 Essential oils etc	0.84	0.87	0.03
56 Fertilizers (excluding crude)	0.77	0.75	-0.02
57 Plastics in primary forms	0.76	0.76	0.00
58 Plastics in non-primary forms	0.63	0.63	0.00
59 Chemical materials and products, n.e.s.	0.90	0.93	0.03
61 Leather and leather manufactures	0.05	0.05	0.00
62 Rubber manufactures n.e.s.	1.67	1.69	0.02
63 Cork and wood manufactures	0.34	0.33	-0.01
64 Paper, paperboard and articles of paper pulp, of paper or of paperboard	1.13	1.10	-0.03
65 Textile yarn, fabrics, made-up articles, n.e.s., and related products	1.10	1.09	-0.01
66 Non-metallic mineral manufacts	1.03	1.02	-0.01
67 Iron and steel	1.89	1.87	-0.02
68 Non-ferrous metals	1.47	1.41	-0.06
69 Manufactures of metals, n.e.s.	2.72	2.69	-0.03
71 Power generating machinery and equipment	2.10	2.07	-0.03
72 Machinery specialised for particular industries	5.04	4.85	-0.19
74 General industrial machinery and equipment, n.e.s., and machine parts, n.e.s.	4.95	4.86	-0.09
75 Office machines and ADP machines	4.20	4.25	0.05
76 Telecommunications and sound recording equipment and reproducing apparatus and equipment	5.19	5.14	-0.05
77 Electrical machinery, etc. and parts thereof	4.96	4.94	-0.02
78 Road vehicles (incl. air-cushion vehicles)	12.76	12.81	0.05
79 Other transport equipment	2.14	2.08	-0.06
81 Prefabricated buildings and fixtures n.e.s.	0.57	0.56	-0.01
82 Furniture and parts thereof	1.21	1.19	-0.02
83 Travel goods and handbags	0.35	0.35	0.00
84 Articles of apparel and clothing	2.45	2.41	-0.04
85 Footwear	0.58	0.57	-0.01
87 Professional, scientific and controlling instruments and apparatus, n.e.s.	2.23	2.28	0.05
88 Photographic and optical goods	0.61	0.60	-0.01
89 Miscellaneous manufactured articles, n.e.s.	3.67	3.62	-0.05
97 Gold, non-monetary	2.97	2.96	-0.01

(a) Index reference period: 2011-12 = 100.0.

(b) Differs from previously published June quarter 2012 due to the annual reweighting.

IMPORT PRICE INDEX(a): SITC sections

<i>Period</i>	<i>Food and live animals (0)</i>	<i>Beverages and tobacco (1)</i>	<i>Crude materials, inedible, except fuels (2)</i>	<i>Mineral fuels, lubricants and related materials (3)</i>	<i>Animal and vegetable oils, fats and waxes (4)</i>	<i>Chemicals and related products, n.e.s. (5)</i>	<i>Manufactured goods classified chiefly by material (6)</i>	<i>Machinery and transport equipment (7)</i>	<i>Miscellaneous manufactured articles (8)</i>	<i>Commodities and transactions, n.e.s. (9)</i>
2008-09	108.7	106.1	126.8	84.1	129.9	115.2	110.9	120.1	121.1	71.5
2009-10	99.1	107.1	94.9	75.1	94.7	100.9	99.7	109.8	106.4	75.1
2010-11	96.8	103.6	102.5	84.9	97.8	99.8	99.8	103.3	100.1	84.9
2011-12	100.0	100.0	100.0	100.0	100.0	100.0	100.0	100.0	100.0	100.0
2007										
December	90.1	98.7	95.7	83.6	94.4	96.4	94.2	107.3	99.5	53.0
2008										
March	95.1	99.7	101.9	92.8	111.2	97.4	94.5	107.1	100.2	61.4
June	95.5	99.4	111.2	107.6	120.7	99.3	94.6	104.1	97.5	57.1
September	97.4	102.2	124.8	120.6	121.1	109.0	99.2	105.2	100.9	58.8
December	117.0	103.5	162.5	90.2	137.9	127.4	117.0	124.3	128.2	71.3
2009										
March	111.9	110.1	127.9	60.9	140.4	116.1	119.3	129.1	134.8	82.5
June	108.4	108.4	92.1	64.6	120.3	108.4	108.0	121.6	120.5	73.2
September	101.5	108.3	90.1	74.4	103.6	104.2	103.3	114.5	112.2	69.6
December	95.2	107.8	90.2	74.0	97.9	100.3	97.0	108.2	104.1	73.3
2010										
March	98.7	107.1	94.6	73.6	92.3	98.2	98.2	108.8	103.9	74.8
June	101.0	105.3	104.7	78.4	85.0	100.7	100.1	107.6	105.4	82.7
September	99.8	105.4	101.5	77.8	89.2	102.2	103.4	108.1	106.4	83.1
December	94.3	103.2	101.3	77.0	95.2	98.5	98.8	103.6	99.2	84.8
2011										
March	96.1	103.5	104.0	87.4	99.0	98.5	98.8	102.0	98.8	84.5
June	96.9	102.4	103.2	97.2	107.9	99.8	98.0	99.5	96.1	87.2
September	97.9	100.5	102.2	94.5	104.9	99.8	99.2	99.1	97.4	99.7
December	100.7	99.4	102.4	99.8	105.1	100.4	100.6	100.8	100.9	102.9
2012										
March	99.7	99.3	94.9	100.8	94.7	98.5	99.4	99.2	99.3	98.9
June	101.7	100.8	100.5	104.8	95.4	101.4	100.9	100.9	102.4	98.5
September	99.8	96.2	96.8	95.3	91.0	99.7	99.6	100.1	101.5	98.2

(a) Index reference period: 2011-12 = 100.0.

IMPORT PRICE INDEX(a): Consumption goods

BALANCE OF PAYMENTS BROAD ECONOMIC CATEGORIES

	Consumption goods total	<i>Food and beverages, mainly for consumption</i>	<i>Household electrical items</i>	<i>Non-industrial transport equipment</i>	<i>Textiles, clothing and footwear</i>	<i>Toys, books and leisure goods</i>	<i>Consumption goods, n.e.s.</i>
2008-09	113.7	109.4	140.9	106.8	109.9	126.6	113.7
2009-10	105.7	101.0	124.7	105.9	95.6	110.4	107.0
2010-11	101.7	97.7	107.9	102.3	94.4	104.1	104.6
2011-12	100.0	100.0	100.0	100.0	100.0	100.0	100.0
2007							
December	100.3	93.0	130.4	100.7	88.5	105.9	102.6
2008							
March	101.3	97.5	126.9	102.9	88.6	106.5	101.3
June	100.2	97.4	121.6	102.1	85.3	101.4	100.5
September	102.2	99.3	128.2	101.7	89.8	105.6	102.4
December	117.7	116.0	145.8	106.1	116.1	135.3	118.4
2009							
March	120.8	113.2	149.1	110.2	123.3	140.2	120.9
June	114.0	109.1	140.4	109.2	110.4	125.1	113.1
September	108.7	103.4	132.0	107.7	101.4	115.0	108.4
December	103.6	98.0	122.8	105.6	92.6	106.7	104.7
2010							
March	104.9	100.5	122.9	106.1	92.5	109.9	106.6
June	105.6	102.2	120.9	104.2	95.8	109.9	108.2
September	105.4	100.6	116.4	103.1	99.2	111.1	108.7
December	101.2	95.8	107.4	102.6	92.9	103.9	104.3
2011							
March	100.6	97.1	106.1	101.6	94.0	102.0	103.0
June	99.6	97.2	101.8	101.7	91.4	99.3	102.3
September	99.5	98.1	101.9	100.9	96.8	99.0	100.0
December	101.2	100.4	101.6	100.2	101.8	99.7	102.4
2012							
March	98.4	99.6	97.3	98.7	99.7	99.1	97.1
June	100.8	101.8	99.3	100.2	101.8	102.1	100.5
September	99.5	99.5	98.1	100.2	100.4	101.9	98.1

(a) Index reference period: 2011-12 = 100.0.

BALANCE OF PAYMENTS BROAD ECONOMIC CATEGORIES

<i>Period</i>	Capital goods total	<i>Machinery and industrial equipment</i>	<i>ADP equipment</i>	<i>Telecommunications equipment</i>	<i>Civil aircraft</i>	<i>Industrial transport equipment, n.e.s.</i>	<i>Capital goods, n.e.s.</i>
2008-09	124.1	116.5	153.1	135.9	129.7	106.0	123.4
2009-10	111.0	106.2	126.6	115.6	110.4	102.3	113.7
2010-11	103.7	101.3	110.6	106.3	102.0	101.2	103.8
2011-12	100.0	100.0	100.0	100.0	100.0	100.0	100.0
2007							
December	108.3	97.8	143.9	125.0	101.5	98.0	108.7
2008							
March	107.5	96.5	139.6	126.2	102.0	97.4	108.6
June	104.8	95.5	128.9	119.9	98.3	94.4	107.7
September	105.6	97.7	128.9	119.5	101.7	95.6	102.8
December	130.0	121.1	165.4	146.3	136.7	107.0	129.4
2009							
March	135.3	127.6	167.6	145.4	146.8	113.1	136.0
June	125.4	119.5	150.4	132.5	133.5	108.2	125.5
September	116.8	110.1	136.4	122.3	117.2	107.1	121.9
December	109.1	104.6	123.8	114.2	106.2	100.7	112.7
2010							
March	109.5	105.8	123.3	113.6	108.3	103.0	108.7
June	108.4	104.3	122.9	112.4	109.8	98.4	111.5
September	109.5	106.3	122.0	113.3	110.7	101.7	109.7
December	104.2	101.6	111.1	107.0	101.9	102.5	104.1
2011							
March	102.2	99.9	107.9	104.3	99.9	100.9	102.6
June	98.8	97.4	101.4	100.5	95.5	99.5	98.8
September	98.5	98.3	99.9	98.2	95.9	98.9	99.1
December	101.1	101.3	101.8	102.7	100.9	98.4	101.0
2012							
March	99.3	99.4	97.7	98.6	99.4	102.0	98.6
June	101.1	101.1	100.6	100.5	103.8	100.8	101.4
September	100.4	98.4	101.2	99.7	102.4	102.4	103.3

(a) Index reference period: 2011-12 = 100.0.

IMPORT PRICE INDEX(a): Intermediate and other merchandise goods

BALANCE OF PAYMENTS BROAD ECONOMIC CATEGORIES

<i>Period</i>	Intermediate and other merchandise goods total	<i>Intermediate and other goods total excluding non- monetary gold</i>	<i>Food and beverages, mainly for industry</i>	<i>Primary industrial supplies, n.e.s.</i>	<i>Fuels and lubricants</i>	<i>Parts for transport equipment</i>	<i>Parts for ADP equipment</i>	<i>Other parts for capital goods</i>	<i>Organic and inorganic chemicals</i>
2008-09	100.2	103.5	107.9	140.6	83.7	107.8	161.3	116.9	120.3
2009-10	90.1	91.5	92.1	98.8	75.3	101.2	127.1	108.3	96.9
2010-11	93.4	93.8	99.7	103.3	84.6	99.9	111.2	101.7	89.7
2011-12	100.0	100.0	100.0	100.0	100.0	100.0	100.0	100.0	100.0
2007									
December	86.7	90.6	77.2	98.6	84.8	92.0	149.7	101.9	88.9
2008									
March	91.4	95.0	88.3	106.5	93.8	94.0	145.5	101.2	93.1
June	95.8	100.6	96.3	121.4	109.1	91.7	132.9	99.1	94.2
September	103.8	109.3	99.7	139.6	121.3	94.0	134.3	100.8	114.4
December	107.5	111.8	119.1	185.0	89.0	111.6	174.9	121.7	129.0
2009									
March	97.8	99.3	109.2	138.9	60.2	116.4	179.1	126.4	126.2
June	91.5	93.5	103.6	98.7	64.4	109.1	156.7	118.8	111.7
September	91.4	93.9	94.2	97.4	74.4	103.4	138.0	113.4	109.1
December	88.6	90.1	90.6	94.5	74.3	98.5	123.5	107.1	103.2
2010									
March	88.4	89.6	92.4	97.1	73.8	100.1	123.2	106.3	88.4
June	91.9	92.5	91.3	106.1	78.5	102.6	123.6	106.2	86.7
September	92.9	93.4	96.6	99.9	77.4	103.1	123.8	106.8	92.0
December	90.0	90.1	95.9	101.6	76.9	99.7	111.6	101.6	87.6
2011									
March	93.7	94.2	99.3	105.7	87.2	99.3	108.2	100.9	87.7
June	97.1	97.6	106.8	106.0	96.8	97.6	101.0	97.6	91.3
September	97.3	97.1	104.0	102.2	94.4	97.8	99.3	98.4	97.7
December	100.1	99.9	103.1	101.3	99.7	100.3	101.6	100.8	94.9
2012									
March	100.0	100.1	96.8	94.7	100.9	100.2	97.8	99.5	100.0
June	102.6	102.9	96.1	101.8	104.9	101.7	101.3	101.3	107.3
September	98.6	98.6	93.5	98.0	95.6	100.0	101.9	100.5	103.6

(a) Index reference period: 2011-12 = 100.0.

BALANCE OF PAYMENTS BROAD ECONOMIC CATEGORIES *continued*

<i>Period</i>	<i>Paper and paperboard</i>	<i>Textile yarn and fabric</i>	<i>Iron and steel</i>	<i>Plastics</i>	<i>Processed industrial supplies, n.e.s.</i>	<i>Non- monetary gold</i>
2008-09	121.3	101.9	117.1	123.9	115.7	71.5
2009-10	109.1	87.0	96.5	111.7	98.5	75.1
2010-11	102.2	90.6	101.7	106.0	98.8	84.9
2011-12	100.0	100.0	100.0	100.0	100.0	100.0
2007						
December	114.5	84.3	92.0	94.4	94.1	53.0
2008						
March	111.6	85.2	90.3	95.1	97.5	61.4
June	111.1	84.7	92.1	95.6	99.1	57.1
September	115.3	88.7	103.3	104.0	106.9	58.8
December	120.3	110.0	132.1	138.2	129.0	71.3
2009						
March	126.8	109.7	131.5	132.6	118.0	82.5
June	122.7	99.1	101.5	120.7	108.7	73.3
September	114.3	88.9	101.8	112.7	102.0	69.6
December	108.8	83.5	92.1	108.6	96.2	73.3
2010						
March	108.0	85.7	95.2	109.0	96.7	74.8
June	105.1	89.8	97.0	116.4	99.0	82.7
September	105.9	94.5	106.5	115.7	101.9	83.1
December	104.3	87.8	98.2	101.8	97.2	84.8
2011						
March	100.5	88.7	99.8	102.2	98.1	84.5
June	98.1	91.5	102.3	104.4	98.0	87.2
September	100.2	96.2	101.4	100.3	98.5	99.7
December	101.6	101.7	102.2	101.2	99.7	102.9
2012						
March	97.9	101.4	99.2	97.1	100.3	98.9
June	100.4	100.7	97.3	101.5	101.6	98.5
September	98.6	98.5	96.2	102.0	100.3	98.2

(a) Index reference period: 2011-12 = 100.0.

EXPORT PRICE INDEX (a): All groups, index numbers and percentage changes

<i>Period</i>	<i>Index numbers</i>	<i>% change from previous period</i>	<i>% change from corresponding quarter of previous year</i>
2008-09	100.3	31.3	..
2009-10	80.4	-19.8	..
2010-11	95.9	19.3	..
2011-12	100.0	4.3	..
2007			
December	72.5	-0.5	-3.1
2008			
March	75.0	3.4	0.3
June	85.1	13.5	13.3
September	96.8	13.7	32.8
December	112.2	15.9	54.8
2009			
March	107.0	-4.6	42.7
June	85.0	-20.6	-0.1
September	76.8	-9.6	-20.7
December	75.5	-1.7	-32.7
2010			
March	78.4	3.8	-26.7
June	91.0	16.1	7.1
September	98.1	7.8	27.7
December	90.2	-8.1	19.5
2011			
March	94.8	5.1	20.9
June	100.6	6.1	10.5
September	104.5	3.9	6.5
December	103.0	-1.4	14.2
2012			
March	95.8	-7.0	1.1
June	96.7	0.9	-3.9
September	90.5	-6.4	-13.4

.. not applicable

(a) Index reference period: 2011-12 = 100.0.

EXPORT PRICE INDEX(a): SITC contribution to all groups index

Category	CONTRIBUTION TO ALL GROUPS INDEX		CHANGE IN POINTS CONTRIBUTION
	Jun Qtr 2012(b)	Sep Qtr 2012	Jun Qtr 2012 to Sep Qtr 2012
ALL GROUPS			
All groups	96.7	90.5	-6.2
SITC SECTIONS			
0 Food and live animals	9.66	9.63	-0.03
1 Beverages and tobacco	0.83	0.87	0.04
2 Crude materials, inedible, except fuels	35.34	31.20	-4.14
3 Mineral fuels, lubricants and related materials	27.26	25.68	-1.58
4 Animal and vegetable oils, fats and waxes	0.21	0.20	-0.01
5 Chemicals and related products, n.e.s.	3.27	3.28	0.01
6 Manufactured goods classified chiefly by material	6.87	6.57	-0.30
7 Machinery and transport equipment	4.95	4.85	-0.10
8 Miscellaneous manufactured articles	1.94	1.89	-0.05
9 Commodities and transactions not classified elsewhere in the SITC	6.39	6.37	-0.02

(a) Index reference period: 2011-12 = 100.0.

(b) Differs from previously published June quarter 2012 due to the annual reweighting.

Category	CONTRIBUTION TO ALL GROUPS INDEX		CHANGE IN POINTS CONTRIBUTION	
	Jun Qtr 2012(b)	Sep Qtr 2012	Jun Qtr 2012 to Sep Qtr 2012	
.....				
SELECTED SITC DIVISIONS				
00	Live animals other than animals of division 03	0.44	0.43	-0.01
01	Meat and meat preparations	2.72	2.73	0.01
02	Dairy products and birds' eggs	0.82	0.78	-0.04
03	Fish, crustaceans, molluscs and aquatic invertebrates and preparations thereof	0.36	0.37	0.01
04	Cereals and cereal preparations	3.13	3.16	0.03
05	Vegetables and fruit	0.64	0.69	0.05
06	Sugars, sugar preparations and honey	0.68	0.61	-0.07
07	Coffee, tea, cocoa, spices and manufactures thereof	0.11	0.10	-0.01
08	Feeding stuff for animals (not including unmilled cereals)	0.41	0.44	0.03
09	Miscellaneous edible products and preparations	0.34	0.34	0.00
11	Beverages	0.79	0.83	0.04
21	Hides, skins and furskins, raw	0.32	0.32	0.00
22	Oil seeds and oleaginous fruits	0.50	0.51	0.01
24	Cork and wood	0.42	0.42	0.00
26	Textile fibres and their wastes	1.96	1.65	-0.31
27	Crude fertilisers, other than those of division 56, and crude minerals (excluding coal, petroleum)	0.35	0.34	-0.01
28	Metalliferous ores and metal scrap	31.58	27.78	-3.80
32	Coal, coke and briquettes	17.32	16.28	-1.04
33	Petroleum, petroleum products and related materials	5.15	4.66	-0.49
34	Gas, natural and manufactured	4.79	4.74	-0.05
41	Animal oils and fats	0.14	0.12	-0.02
51	Organic chemicals	0.08	0.08	0.00
52	Inorganic chemicals	0.27	0.32	0.05
53	Dyeing, tanning and colouring materials	0.29	0.29	0.00
54	Medicinal and pharmaceutical products	1.61	1.62	0.01
57	Plastics in primary forms	0.16	0.16	0.00
58	Plastics in non-primary forms	0.13	0.12	-0.01
59	Chemical materials and products, n.e.s.	0.36	0.34	-0.02
61	Leather, leather manufactures, n.e.s., and dressed furskins	0.09	0.09	0.00
62	Rubber manufactures, n.e.s.	0.08	0.07	-0.01
64	Paper, paperboard, and articles of paper pulp, of paper or of paperboard	0.30	0.30	0.00
66	Non-metallic mineral manufactures, n.e.s.	0.35	0.34	-0.01
67	Iron and steel	0.84	0.77	-0.07
68	Non-ferrous metals	4.69	4.50	-0.19
71-75	Power generating, general industrial and other specialised machinery and equipment	2.29	2.27	-0.02
76-77	Telecommunications equipment, sound-recording apparatus and electrical machinery, n.e.s.	0.99	0.96	-0.03
78	Road vehicles (incl. air-cushion vehicles)	1.03	1.01	-0.02
79	Other transport equipment	0.63	0.61	-0.02
81-82	Prefabricated buildings and furniture and parts thereof	0.08	0.08	0.00
87	Professional, scientific and controlling instruments and apparatus, n.e.s.	0.74	0.72	-0.02
88	Photographic apparatus, equipment and supplies and optical goods, n.e.s.	0.10	0.09	-0.01
89	Miscellaneous manufactured articles, n.e.s.	0.90	0.88	-0.02
97	Gold, non-monetary (excluding gold, ores and concentrates)	5.61	5.62	0.01

(a) Index reference period: 2011-12 = 100.0.

(b) Differs from previously published June quarter 2012 due to the annual reweighting.

EXPORT PRICE INDEX(a): SITC sections

<i>Period</i>	<i>Food and live animals (0)</i>	<i>Beverages and tobacco (1)</i>	<i>Crude materials, inedible, except fuels (2)</i>	<i>Mineral fuels, lubricants and related materials (3)</i>	<i>Animal and vegetable oils, fats and waxes (4)</i>	<i>Chemicals and related products, n.e.s. (5)</i>	<i>Manufactured goods classified chiefly by material (6)</i>	<i>Machinery and transport equipment (7)</i>	<i>Miscellaneous manufactured articles (8)</i>	<i>Commodities and transactions, n.e.s. (9)</i>
2008-09	101.4	125.1	90.1	115.6	82.1	95.7	105.3	117.6	125.9	73.7
2009-10	89.3	110.7	73.0	71.7	85.8	89.7	97.7	106.6	113.1	75.8
2010-11	98.2	104.1	101.5	87.4	107.5	94.9	105.9	100.9	103.8	85.9
2011-12	100.0	100.0	100.0	100.0	100.0	100.0	100.0	100.0	100.0	100.0
2007										
December	75.7	125.3	69.9	54.1	107.5	84.7	123.7	103.3	114.0	54.2
2008										
March	87.3	128.3	70.1	55.3	116.2	83.2	122.4	103.3	113.2	61.6
June	94.3	124.7	84.7	74.7	100.3	87.6	125.2	100.8	109.9	59.3
September	100.0	119.5	90.5	106.4	97.1	91.2	123.2	105.8	117.1	61.7
December	112.8	127.6	103.4	133.7	56.9	100.3	119.5	124.0	132.8	74.4
2009										
March	101.3	129.9	93.3	134.3	71.6	98.3	92.2	124.8	131.6	84.5
June	91.3	123.3	73.1	88.1	102.9	93.1	86.4	115.7	121.9	74.3
September	89.5	112.7	65.5	68.9	86.7	89.4	93.9	109.3	118.8	70.3
December	84.8	110.0	64.5	67.6	88.8	88.1	92.6	104.9	112.3	74.2
2010										
March	90.2	110.0	68.3	69.3	78.4	89.8	99.3	105.4	108.7	75.1
June	92.6	110.1	93.5	80.8	89.1	91.6	105.0	106.6	112.4	83.5
September	93.6	107.6	105.8	91.6	94.8	94.3	104.1	105.6	107.8	84.4
December	95.7	105.3	92.3	79.4	110.5	93.2	103.8	100.2	103.4	85.3
2011										
March	100.4	105.8	99.6	84.5	118.3	96.0	108.3	100.3	103.1	85.4
June	103.1	97.7	108.1	94.0	106.3	96.2	107.2	97.3	100.8	88.5
September	102.1	100.5	108.8	103.4	104.6	97.5	106.6	98.7	101.0	100.7
December	102.6	100.6	103.8	104.5	103.9	98.9	98.7	99.5	101.5	103.3
2012										
March	98.0	98.1	92.6	95.6	94.0	101.2	98.3	99.6	98.5	98.9
June	97.3	100.7	94.9	96.6	97.5	102.4	96.4	102.2	99.0	97.2
September	97.0	105.4	83.8	91.0	92.7	102.6	92.2	100.3	96.3	96.9

(a) Index reference period: 2011-12 = 100.0.

BALANCE OF PAYMENTS CLASSIFICATION OF EXPORTS

<i>Period</i>	<i>Rural goods total</i>	<i>Meat and meat preparations</i>	<i>Cereal grains and cereal preparations</i>	<i>Wool and sheepskins</i>	<i>Other rural</i>
2008-09	95.6	100.8	124.4	64.3	90.8
2009-10	85.0	91.3	90.9	68.8	83.8
2010-11	95.0	101.2	98.6	89.2	92.0
2011-12	100.0	100.0	100.0	100.0	100.0
2007					
December	77.6	71.2	85.5	74.9	80.1
2008					
March	87.7	80.2	108.5	79.0	86.7
June	92.7	93.4	118.5	73.9	87.7
September	96.9	105.2	120.0	70.7	90.5
December	105.1	112.8	141.0	66.7	98.6
2009					
March	94.1	96.7	125.9	60.3	90.7
June	86.2	88.5	110.5	59.6	83.2
September	84.8	91.8	98.2	61.5	82.5
December	81.4	85.8	90.0	65.6	80.1
2010					
March	85.4	91.2	87.6	74.9	84.4
June	88.2	96.2	87.6	73.2	88.3
September	90.2	99.9	88.8	73.2	90.3
December	91.7	96.2	96.8	78.1	90.5
2011					
March	97.0	103.7	102.5	96.0	91.7
June	101.2	105.1	106.3	109.3	95.4
September	103.2	96.7	109.4	112.2	101.8
December	101.5	101.0	101.3	99.7	102.1
2012					
March	98.0	102.3	94.5	96.0	98.0
June	97.2	100.1	94.7	92.0	98.1
September	95.1	100.3	95.4	84.4	94.5

(a) Index reference period: 2011-12 = 100.0.

BALANCE OF PAYMENTS CLASSIFICATION OF EXPORTS

<i>Period</i>	Non-rural goods total (excl. non- monetary gold)	<i>Metal ores and minerals</i>	<i>Coal, coke and briquettes</i>	<i>Other mineral fuels</i>	<i>Metals (excl. non- monetary gold)</i>	<i>Machinery</i>	<i>Transport equipment</i>	<i>Other manufactures</i>	<i>Other non- rural</i>	<i>Non- monetary gold</i>
2008-09	104.2	92.9	143.0	85.1	107.0	116.8	120.4	105.3	97.4	71.4
2009-10	80.0	73.0	72.3	70.3	99.3	106.9	107.4	97.1	92.4	75.3
2010-11	97.1	103.8	90.0	82.9	108.2	101.2	100.5	99.4	97.4	84.9
2011-12	100.0	100.0	100.0	100.0	100.0	100.0	100.0	100.0	100.0	100.0
2007										
December	73.7	70.4	47.3	73.5	131.1	103.0	105.5	99.0	78.2	53.0
2008										
March	73.8	69.5	46.4	78.2	128.9	103.5	104.4	98.3	81.1	61.4
June	86.8	86.3	71.6	92.0	132.9	101.7	100.8	97.1	85.4	57.1
September	101.1	93.0	121.5	96.3	130.1	107.7	104.1	101.1	88.2	58.7
December	118.0	107.7	165.8	97.6	122.0	122.5	128.1	112.1	102.2	71.2
2009										
March	111.9	96.9	174.4	83.8	89.9	122.9	129.7	107.9	104.4	82.5
June	85.8	73.9	110.2	62.6	86.1	114.2	119.7	99.9	94.7	73.3
September	76.0	65.1	72.5	64.2	95.6	109.0	111.5	97.0	88.1	69.6
December	74.4	63.7	67.5	67.1	94.0	105.4	105.4	95.0	88.3	74.0
2010										
March	77.3	67.3	66.4	71.9	100.9	106.2	105.3	96.5	96.7	74.7
June	92.1	95.9	82.6	78.0	106.6	106.8	107.5	99.9	96.6	82.7
September	100.8	109.7	96.9	81.2	105.5	105.8	105.4	100.3	93.5	83.0
December	90.3	94.4	81.5	76.1	106.4	100.8	99.5	97.7	94.4	84.7
2011										
March	95.4	101.4	84.5	85.7	111.3	100.5	100.2	99.9	100.4	84.4
June	101.7	109.7	97.0	88.7	109.5	97.7	97.0	99.8	101.1	87.3
September	105.1	109.1	106.1	98.7	107.5	99.1	98.0	101.9	101.4	100.3
December	103.2	104.2	107.1	100.0	98.3	99.3	100.0	100.8	104.4	103.3
2012										
March	95.1	92.1	94.9	96.7	98.7	99.4	100.1	97.6	95.6	99.2
June	96.6	94.6	92.0	104.6	95.5	102.2	102.0	99.7	98.6	97.2
September	89.3	83.3	86.4	98.9	90.8	100.4	99.8	95.7	95.4	97.5

(a) Index reference period: 2011-12 = 100.0.

EXPLANATORY NOTES

INTRODUCTION

1 This publication contains indexes measuring changes in the prices paid for imports of merchandise that are landed in Australia each quarter and prices received for exports of merchandise that are shipped from Australia each quarter. The import price indexes are in tables 1–6 and the export price indexes are in tables 7–11.

2 The indexes are calculated on the index reference period 2011–12 = 100.0.

SCOPE

3 The import price index excludes the following items (representing less than 5% of the value of merchandise imported during the weighting period) because of the inherent difficulties in pricing the items to constant quality (see paragraph 15 below):

- live animals (not for food)
- jewellery and other articles of precious metal, n.e.s.
- military equipment
- commodities not classified according to kind
- works of art, collectors' pieces, antiques
- railway vehicles
- ships of various types.

4 The export price index includes re-exports of merchandise (i.e. goods which are imported into Australia and exported at a later date without physical transformation).

CLASSIFICATIONS

5 Index numbers for selected sections of the Standard International Trade Classification (SITC) are provided in table 3 (import price index) and table 9 (export price index). The SITC (Revision 4) used from the September quarter 2008 onwards is the United Nations' updated version, replacing SITC (Revision 3). SITC (Revision 4) retains the overall structure of SITC (Revision 3) and consists of the same number of sections, divisions and groups. Changes to the classification labels and components were made at levels lower than those used in the import and export prices indexes. As a result, there has been no material impact on the indexes, which remain comparable across the changes in classification.

6 The import price index is also presented by Balance of Payments Broad Economic Categories in tables 4–6, which have been disaggregated into balance of payments groupings of consumption goods, capital goods and intermediate and other merchandise goods. From the September quarter 2008 onwards, the previous heading of Classification of Broad Economic Categories (BEC) End Use, has been replaced with Balance of Payments Broad Economic Categories. This is simply a name change, with the series remaining comparable to previously published series.

7 The export price index is also presented by balance of payments classification of exports groupings in tables 10 and 11.

ITEMS AND WEIGHTS

8 The import price index and export price index are annually reweighted chained Laspeyres indexes. This method of weighting was introduced for the September quarter 2000 and replaces the 'fixed-base' method of weighting in which the weighting patterns are updated infrequently (generally once every 5 or 10 years).

9 The annual reweighting and chaining process involves a number of steps in order to provide new weights each year. The current weighting basis for the import price index was derived from the average value of import items during 2011–12. This differs slightly from the export price index which has used the average value of export items during 2010–11 and 2011–12, due to the greater volatility associated with the value of export items. These weights were revalued to reflect link period (June quarter 2012) price levels. This means, for example, that the weights for the import price index are effectively determined using quantities from 2011–12 and prices from the June quarter 2012. Indexes derived by using the new weights for the September quarter 2012 were then linked to the already published June quarter 2012 (link period) levels which were derived using the previous series weights. Using this methodology, long-term chain

EXPLANATORY NOTES *continued*

ITEMS AND WEIGHTS *continued*

linked series can be constructed over time on a consistent reference base for continuity and user convenience, but using annually refreshed weights. From the September quarter 2012, the index reference period for each index series is 2011–12 = 100.0 even though the weights are being updated each year.

10 The commodities directly represented in each index (the index items) were selected on the basis of the significance of their import and export values in the period 2011–12 for imports and 2010–11 and 2011–12 for exports. All significant commodities were selected for pricing. The weights for minor commodities which are not directly priced are included with those of comparable directly priced items where prices are likely to move in a similar way.

PRICE MEASUREMENT

11 In general, prices of individual shipments are obtained from major importers and exporters of the selected items and relate to the quarter in which the imported goods physically arrive in Australia and the exported goods physically leave Australia.

12 Imports are priced on a 'free on board' (f.o.b.), country of origin basis. Therefore freight and insurance charges involved in shipping goods from foreign to Australian ports are excluded from the prices used in the index, as are Australian import duties and taxes. Similarly, exports are priced on a f.o.b. basis at the main Australian ports of export. Exports are exempt from taxes on products.

13 As the prices used in the indexes are expressed in Australian currency, changes in the relative value of the Australian dollar and overseas currencies can have a direct impact on price movements for the many commodities that are bought and sold in currencies other than Australian dollars. Prices reported in a foreign currency are converted to Australian dollars using relevant exchange rates. Where imports or exports are transacted in prices expressed in terms of a foreign currency and forward exchange cover is used, the prices in the indexes exclude the forward exchange cover. As noted, imports are priced on a country of origin basis. Therefore the exchange rates applied are impacted by the differences between the date of transaction (ownership change) and the shipping time from the country of origin to Australia.

14 The main pricing methodology used is specification pricing, under which a manageable sample of precisely specified products is selected, in consultation with each reporting business, for repeat pricing. In specifying the products, care is taken to ensure that they are fully defined in terms of all the characteristics which influence their transaction prices. As such, all the relevant technical characteristics need to be described (e.g. make, model, features) along with the unit of sale, type of packaging, conditions of sale (e.g. delivered, payment within 30 days), etc. The goods are also specified by country and market in order to lessen the impact of price variations attributable solely to changes over time in the mix of countries, or markets.

15 When the quality or specifications of an item being priced change over time, adjustments are made to the reported prices so that the index captures only pure price change. That is, any element of price change attributable to a change in quality is removed. If there is an increase (decrease) in the quality of an item, then the price index is adjusted downwards (upwards) to reflect the 'worth' of the quality change. This technique is known as pricing to constant quality.

16 Wherever possible, prices from volume selling products being traded with predominant countries, or markets, are obtained to ensure specifications have a good chance of being re-priced over time and index series are representative of overall price movements. Individual product weights and weights between markets and countries are regularly reviewed to keep the indexes up to date. The ABS has access to a rich source of international merchandise trade data and selectively uses average unit values in the export price index to augment specification pricing. Imported commodities are typically

EXPLANATORY NOTES *continued*

PRICE MEASUREMENT *continued*

more stable in price, but non-homogenous in character and generally do not lend themselves to measurement by average unit value.

DIFFERENCES BETWEEN EPI AND EXPORT IPD

17 There are differences between the export price index (EPI) presented in this publication, and the export implicit price deflator (IPD) presented in *National Income, Expenditure and Product* (cat. no. 5206.0) and *Balance of Payments and International Investment Position* (cat. no. 5302.0). The differences are mainly due to the index methodology (fixed basket price index for the EPI, whereas the IPD is a quarterly weighted index, which includes price change and compositional change from period to period), the completeness of the dataset used and the source of the data. Further, the EPI is calculated from predominantly sampled businesses, whereas the export IPD is calculated from predominantly international merchandise trade data supplied by Customs. These differences can result in significant divergences between the measures when prices of commodities, which form a large proportion of exports, are volatile.

INDEX NUMBERS

18 Index numbers for financial years are simple averages of the relevant quarterly index numbers.

ANALYSIS OF INDEX CHANGES

19 Care should be exercised when interpreting quarter-to-quarter movements in the indexes as short-term movements do not necessarily indicate changes in trend.

20 Movements in indexes from one period to another can be expressed either as changes in 'index points' or as percentage changes. The following example illustrates the method of calculating index points changes and percentage changes between any two periods:

Export price index, All groups index number:

September quarter 2012 90.5 (see table 7)

less September quarter 2011 104.5 (see table 7)

Change in index points -14.0

Percentage change $-14.0/104.5 \times 100 = -13.4\%$

21 Tables 2 and 8 provide analyses of the contribution which SITC sections and divisions make to the All groups import price index and export price index, respectively. For example, exports of mineral fuels, lubricants and related materials contributed 25.68 index points to the All groups export price index number of 90.5 for the September quarter 2012 and -1.58 index points to the net change of -6.18 index points between the June 2012 and September 2012 quarters.

EXPLANATORY NOTES *continued*

FURTHER INFORMATION

22 For further information on price indexes in the ABS refer to the following publications:

Information Paper: Producer and International Trade Price Indexes; Concepts, Sources and Methods 2006, (cat. no. 6429.0)

Information Paper: Changes to Time Series Spreadsheets for Producer Price Indexes, Australia, Feb 2006, (cat. no. 6427.0.55.001)

Information Paper: Update on ANZSIC 2006 Implementation for Producer and International Trade Price Indexes, Australia, 2009, (cat. no. 6427.0.55.002)

Information Paper: Review of the Producer and International Trade Price Indexes, 2011 (cat. no. 6427.0.55.003)

Information Paper: Outcome of the Review of the Producer and International Trade Price Indexes, 2012 (cat. no. 6427.0.55.004)

Information Paper: Implementation of the Review of the Producer and International Trade Price Indexes, 2012 (cat. no. 6427.0.55.005)

Information Paper: An Analytical Framework for Price Indexes in Australia, (cat. no. 6421.0)

Information Paper: Producer Price Index Developments, (cat. no. 6422.0)

Information Paper: Review of the Import Price Index and Export Price Index, Australia, (cat. no. 6424.0)

Information Paper: Price Indexes and The New Tax System, (cat. no. 6425.0)

RELATED PUBLICATIONS

23 Users may also wish to refer to the following related publications, which are available from the ABS website:

Producer Price Indexes, Australia, (cat. no. 6427.0)

Consumer Price Index, Australia, (cat. no. 6401.0)

Wage Price Index, Australia, (cat. no. 6345.0)

Australian National Accounts, Input–Output Tables, (cat. no. 5209.0)

Balance of Payments and International Investment Position, Australia, (cat. no. 5302.0)

24 Current publications and other products released by the ABS are listed on the ABS website <<http://www.abs.gov.au>>. The ABS also issues a daily *Release Advice* on the website which details products to be released in the week ahead.

ABBREVIATIONS

ABS	Australian Bureau of Statistics
ADP	automatic data processing
AHECC	Australian Harmonised Export Commodity Classification
ANZSIC	Australian and New Zealand Standard Industrial Classification
BEC	Classification by Broad Economic Categories
f.o.b.	free on board
HTISC	Harmonized Tariff Item Statistical Classification
IPD	implicit price deflator
n.e.c.	not elsewhere classified
n.e.s.	not elsewhere specified
SITC	Standard International Trade Classification

APPENDIX 1 INDEX STRUCTURES AND WEIGHTING PATTERNS

COMPOSITION

Both the Import Price Index and the Export Price Index have been reweighted in the September quarter 2012. It is ABS practice to reweight these indexes annually each September quarter, as explained in paragraphs 8–10 of the Explanatory Notes. The new weighting patterns for both the Import Price Index and Export Price Index, based on the Standard International Trade Classification (SITC) (Revision 4), are presented in this Appendix.

All SITC sections and divisions are included in the reweighted index structure for completeness. However, indexes for some of the lower weighted SITC divisions are not constructed separately and so are not available for publication.

Corresponding new weighting patterns based on classification by Broad Economic Categories (BEC), Harmonized Tariff Item Statistical Classification (HTSIC) and Australian and New Zealand Standard Industrial Classification (ANZSIC) for the Import Price Index and Australian Harmonised Export Commodity Classification (AHECC) and ANZSIC for the Export Price Index can be made available on request.

APPENDIX 1 INDEX STRUCTURES AND WEIGHTING PATTERNS *continued*

IMPORT PRICE INDEX GROUPED BY SITC (REVISION 4)(a)(b)

SITC	PERCENTAGE CONTRIBUTION	
	Divisions to Sections 2012	Divisions and Sections to All Groups 2012
0 Food and live animals	100.00	4.03
01 Meat and meat preparations	6.19	0.25
02 Dairy products and birds' eggs	7.56	0.31
03 Fish (not marine mammals), crustaceans, molluscs and aquatic invertebrates, and preparations thereof	14.41	0.58
04 Cereals and cereal preparations	7.55	0.30
05 Vegetables and fruit	20.42	0.82
06 Sugars, sugar preparations and honey	3.76	0.15
07 Coffee, tea, cocoa, spices, and manufactures thereof	15.32	0.62
08 Feeding stuff for animals (excluding unmilled cereals)	5.75	0.23
09 Miscellaneous edible products and preparations	19.04	0.77
1 Beverages and tobacco	100.00	0.83
11 Beverages	87.13	0.72
12 Tobacco and tobacco manufactures	12.87	0.11
2 Crude materials, inedible, except fuels	100.00	1.15
21 Hides, skins and furskins, raw	0.11	0.00
22 Oil seeds and oleaginous fruits	1.99	0.02
23 Crude rubber (including synthetic and reclaimed)	6.11	0.07
24 Cork and wood	24.44	0.28
25 Pulp and waste paper	6.53	0.08
26 Textile fibres and their wastes (not manufactured into yarn or fabric)	3.75	0.04
27 Crude fertilisers (excluding those of Division 56) and crude minerals (excluding coal, petroleum and precious stones)	10.57	0.12
28 Metalliferous ores and metal scrap	31.85	0.37
29 Crude animal and vegetable materials, n.e.s.	14.65	0.17
3 Mineral fuels, lubricants and related materials	100.00	16.50
32 Coal, coke and briquettes	0.11	0.02
33 Petroleum, petroleum products and related materials	93.22	15.38
34 Gas, natural and manufactured	6.67	1.10
4 Animal and vegetable oils, fats and waxes	100.00	0.24
41 Animal oils and fats	8.65	0.02
42 Fixed vegetable fats and oils, crude, refined or fractionated	78.53	0.19
43 Fats and oils (processed), waxes and inedible mixtures or preparations, of animal or vegetable origin, n.e.s.	12.82	0.03
5 Chemicals and related products, n.e.s.	100.00	10.80
51 Organic chemicals	11.55	1.25
52 Inorganic chemicals	6.34	0.68
53 Dyeing, tanning and colouring materials	2.43	0.26
54 Medicinal and pharmaceutical products	44.20	4.77
55 Essential oils and resinoids and perfume materials; toilet, polishing and cleansing preparations	7.66	0.83
56 Fertilisers (other than those of group 272)	7.01	0.76
57 Plastics in primary forms	6.89	0.74
58 Plastics in non-primary forms	5.70	0.62
59 Chemical materials and products, n.e.s.	8.22	0.89

(a) Standard International Trade Classification, Revision 4.

(b) Indexes for some lower weighted sections/divisions are not available for publication.

APPENDIX 1 INDEX STRUCTURES AND WEIGHTING PATTERNS *continued*

IMPORT PRICE INDEX GROUPED BY SITC (REVISION 4)(a)(b) *continued*

SITC	PERCENTAGE CONTRIBUTION	
	Divisions to Sections 2012	Divisions and Sections to All Groups 2012
6 Manufactured goods classified chiefly by material	100.00	11.18
61 Leather, leather manufactures, and dressed furskins, n.e.s.	0.44	0.05
62 Rubber manufactures, n.e.s.	14.70	1.64
63 Cork and wood manufactures (excluding furniture)	2.95	0.33
64 Paper, paperboard, and articles of paper pulp, of paper or of paperboard	9.90	1.11
65 Textile yarn, fabrics, made-up articles, n.e.s., and related products	9.67	1.08
66 Non-metallic mineral manufactures, n.e.s.	9.05	1.01
67 Iron and steel	16.57	1.85
68 Non-ferrous metals	12.88	1.44
69 Manufactures of metals, n.e.s.	23.84	2.67
7 Machinery and transport equipment	100.00	40.91
71 Power-generating machinery and equipment	5.03	2.06
72 Machinery specialised for particular industries	12.11	4.95
73 Metal working machinery	0.75	0.31
74 General industrial machinery and equipment, n.e.s. and machine parts, n.e.s.	11.88	4.86
75 Office machines and automatic data-processing machines	10.08	4.12
76 Telecommunications and sound-recording and reproducing apparatus and equipment	12.47	5.10
77 Electrical machinery, apparatus, appliances, n.e.s., and electrical parts thereof (including non-electrical counterparts, n.e.s., of electrical household-type equipment)	11.90	4.87
78 Road vehicles (including air-cushion vehicles)	30.65	12.54
79 Other transport equipment	5.13	2.10
8 Miscellaneous manufactured articles	100.00	11.45
81 Prefabricated buildings; sanitary, plumbing, heating and lighting fixtures and fittings, n.e.s.	4.91	0.56
82 Furniture, parts thereof; bedding, mattresses, mattress supports, cushions and similar stuffed furnishings	10.37	1.19
83 Travel goods, handbags and similar containers	2.98	0.34
84 Articles of apparel and clothing accessories	20.98	2.40
85 Footwear	4.98	0.57
87 Professional, scientific and controlling instruments and apparatus, n.e.s.	19.13	2.19
88 Photographic apparatus, equipment and supplies and optical goods, n.e.s.; watches and clocks	5.21	0.60
89 Miscellaneous manufactured articles, n.e.s.	31.44	3.60
9 Commodities and transactions not classified elsewhere in the SITC	100.00	2.91
97 Gold, non-monetary (excluding gold ores and concentrates)	100.00	2.91

(a) Standard International Trade Classification, Revision 4.

(b) Indexes for some lower weighted sections/divisions are not available for publication.

APPENDIX 1 INDEX STRUCTURES AND WEIGHTING PATTERNS *continued*

EXPORT PRICE INDEX GROUPED BY SITC (REVISION 4)(a)(b)

SITC Code		PERCENTAGE CONTRIBUTION	
		Division to Sections 2012	Divisions and Sections to All Groups 2012
0	Food and live animals	100.00	9.99
00	Live animals other than animals of division 03	4.57	0.46
01	Meat and meat preparations	28.19	2.82
02	Dairy products and birds' eggs	8.53	0.85
03	Fish (not marine mammals) crustaceans, molluscs and aquatic invertebrates and preparations thereof	3.75	0.37
04	Cereals and cereal preparations	32.44	3.24
05	Vegetables and fruit	6.64	0.66
06	Sugars, sugar preparations and honey	7.03	0.70
07	Coffee, tea, cocoa, spices and manufactures thereof	1.09	0.11
08	Feeding stuff for animals (not including unmilled cereals)	4.20	0.42
09	Miscellaneous edible products and preparations	3.56	0.36
1	Beverages and tobacco	100.00	0.86
11	Beverages	94.84	0.82
12	Tobacco and tobacco manufactures	5.16	0.04
2	Crude materials, inedible, except fuels	100.00	36.53
21	Hides, skins and furskins, raw	0.91	0.33
22	Oil seeds and oleaginous fruits	1.42	0.52
23	Crude rubber (including synthetic and reclaimed)	0.02	0.01
24	Cork and wood	1.18	0.43
25	Pulp and waste paper	0.26	0.09
26	Textile fibres (other than wool top sand other combed wools) and their wastes (not manufactured into yarn or fabric)	5.54	2.03
27	Crude fertilisers, other than those of division 56, and crude minerals (excluding coal, petroleum and precious stones)	1.00	0.37
28	Metalliferous ores and metal scrap	89.39	32.65
29	Crude animal and vegetable materials n.e.s.	0.28	0.10
3	Mineral fuels, lubricants and related materials	100.00	28.19
32	Coal, coke and briquettes	63.54	17.91
33	Petroleum, petroleum products and related materials	18.90	5.33
34	Gas, natural and manufactured	17.56	4.95
4	Animal and vegetable oils, fats and waxes	100.00	0.21
41	Animal oils and fats	66.21	0.14
42	Fixed vegetable fats and oils, crude refined or fractioned	31.92	0.07
43	Animal or vegetable fats and oils, processed; waxes of animal or vegetable origin; mixtures or preparations of animal or vegetable fats or oils n.e.s.	1.87	0.00
5	Chemicals and related products n.e.s.	100.00	3.38
51	Organic chemicals	2.34	0.08
52	Inorganic chemicals	8.34	0.28
53	Dyeing, tanning and colouring materials	8.87	0.30
54	Medicinal and pharmaceutical products	49.20	1.66
55	Essential oils and resinoids and perfume materials; toilet, polishing and cleaning preparations	7.14	0.24
56	Fertilisers (other than those of group 272)	4.47	0.15
57	Plastics in primary forms	4.93	0.17
58	Plastics in non-primary forms	3.83	0.13
59	Chemical materials and products n.e.s.	10.88	0.37

(a) Standard International Trade Classification, Revision 4.

(b) Indexes for some lower weighted sections/divisions are not available for publication.

APPENDIX 1 INDEX STRUCTURES AND WEIGHTING PATTERNS *continued*

EXPORT PRICE INDEX GROUPED BY SITC (REVISION 4)(a)(b) *continued*

SITC Code		PERCENTAGE CONTRIBUTION	
		Division to Sections 2012	Divisions and Sections to All Groups 2012
6	Manufactured goods classified chiefly by material	100.00	7.11
61	Leather, leather manufactures, n.e.s., and dressed furskins	1.33	0.09
62	Rubber manufactures, n.e.s.	1.11	0.08
63	Cork and wood manufactures (excluding furniture)	0.69	0.05
64	Paper, paperboard and articles of paper pulp, of paper or of paperboard	4.39	0.31
65	Textile yarn, fabrics, made-up articles, n.e.s. and related products	1.55	0.11
66	Non-metallic mineral manufactures, n.e.s.	5.06	0.36
67	Iron and steel	12.29	0.87
68	Non-ferrous metals	68.28	4.86
69	Manufactures of metals, n.e.s.	5.30	0.38
7	Machinery and transport equipment	100.00	5.11
71-75	Power generating, general industrial and other specialise machinery and equipment	46.37	2.36
76-77	Telecommunications equipment, sound-recording apparatus and electrical machinery, n.e.s.	20.09	1.03
78	Road vehicles (including air-cushion vehicles)	20.90	1.07
79	Other transport equipment	12.64	0.65
8	Miscellaneous manufactured articles	100.00	2.01
81-82	Prefabricated buildings, building fittings and furniture	4.16	0.08
83	Travel goods, handbags and similar containers	0.62	0.01
84	Articles of apparel and clothing accessories	4.79	0.10
85	Footwear	1.04	0.02
87	Professional, scientific and controlling instruments and apparatus n.e.s.	38.02	0.76
88	Photographic apparatus, equipment and suppliers and optical goods n.e.s., watches and clocks	4.97	0.10
89	Miscellaneous manufactured articles n.e.s.	46.40	0.94
9	Commodities and transactions not classified elsewhere in the SITC	100.00	6.61
93	Special transactions and commodities not classified according to kind	7.97	0.53
96	Coin (other than gold coin), not being legal tender	4.32	0.29
97	Gold, non-monetary (excluding gold ores and concentrates)	87.71	5.79

(a) Standard International Trade Classification, Revision 4.

(b) Indexes for some lower weighted sections/divisions are not available for publication.

APPENDIX 2 RE-REFERENCING THE INTERNATIONAL TRADE PRICE INDEXES

RE-REFERENCING THE INTERNATIONAL TRADE PRICE INDEXES (ITPIs)

1 From the September quarter 2012, the ABS harmonised the index reference periods for the International Trade Price Indexes and the Producer Price Indexes. These series are now presented on an index reference period of 2011–12 = 100.0.

2 The ABS has published conversion factors in 'Table 20 – ITPIs conversion factors, from index reference period 1989–90 to 2011–12' available as a data cube on the 'Downloads' tab of this product. This enables users to convert previously published time series to the new index reference period or to convert index numbers on the new index reference period to an old time series index reference period.

3 The following examples demonstrate the method used by the ABS to calculate the conversion factors to convert from the old (1989–90 = 100.0) to the new (2011–12 = 100.0) index reference period (and vice versa).

CONVERTING AN OLD TIME SERIES TO THE NEW INDEX REFERENCE PERIOD

4 The conversion of time series from the old index reference periods to the new involves a rescaling of the index numbers. The conversion factors that should be applied to the index numbers are calculated by obtaining the ratio of the index numbers on the old (1989–90 = 100.0) to the new (2011–12 = 100.0) index reference period.

5 Conversion factors are calculated using the four quarterly index numbers for the 2011–12 financial year.

IMPORT PRICE INDEX, All groups, index numbers

.....

Period	INDEX REFERENCE PERIOD	
	1989–90=100.0 (old)	2011–12=100.0 (new)
2010–11		
March quarter 2011	116.2	97.4
June quarter 2011	117.1	98.2
2011–12		
September 2011	117.1	98.2
December quarter 2011	120.0	100.6
March quarter 2012	118.6	99.4
June quarter 2012	121.4	101.8
Financial year 2011–12	(a) 119.3	(b) 100.0

.....

- (a) Index number for financial year 2011–12 (index reference period 1989–90 = 100.0) = $(117.1 + 120.0 + 118.6 + 121.4)/4 = 119.3$
- (b) Index number for financial year 2011–12 (index reference period 2011–12 = 100.0) = $(98.2 + 100.6 + 99.4 + 101.8)/4 = 100.0$

6 For example, for the Import Price Index; All Groups an arithmetic conversion factor is obtained as follows:

- Rounded conversion factor (index reference period 1989–90 = 100.0) = $100.0/((117.1 + 120.0 + 118.6 + 121.4)/4) = 0.8384$
- Index number for June quarter 2012 = 121.4 (index reference period 1989–90 = 100.0)
- Index number for the June quarter 2012 (index reference period 2011–12 = 100.0) is $121.4 \times 0.8384 = 101.8$

7 The factor may be used to convert any historical Import Price Index; All groups, index numbers to the new index reference period. The formulae shown in the above example may be followed in respect of any specific time series for which index numbers have been published on the old index reference period.

APPENDIX 2 RE-REFERENCING THE INTERNATIONAL TRADE PRICE INDEXES *continued*

CONVERTING AN OLD TIME SERIES TO THE NEW INDEX REFERENCE PERIOD *continued*

NOTE: The above example is calculated using the published index numbers that have been rounded to one decimal. The ABS has calculated the conversion factors from unrounded index numbers, to obtain a greater degree of precision. The preferred conversion factors which use this greater degree of precision are available electronically, as data cubes, on the 'downloads' tab of this product.

CONVERTING THE RE-REFERENCED SERIES BACK TO PREVIOUS INDEX REFERENCE PERIOD

8 The conversion of the series from the new index reference period to the old involves a rescaling of the index numbers. The rescaling factors are obtained by taking the inverse of the previously described scaling factor.

For example, for the Import Price Index; All groups, the rescaling factor is obtained as follows:

- Rounded conversion factor (index reference period 1989–90 = 100.0) = $((117.1 + 120.0 + 118.6 + 121.4)/4) / 100.0 = 1.1928$
- Index number for the June quarter 2012 (index reference period 2011–12 = 100.0) is 101.8
- Index number for the June quarter 2012 (index reference period 1989–90 = 100.0) is $101.8 \times 1.1928 = 121.4$

9 The factor may be used to convert any historical Import Price Index; All groups index number on the new index reference period. The formulae shown in the above example may be followed in respect of any specific time series for which index numbers have been published on the new index reference period.

ROUNDING

10 Index numbers and percentage changes are always published to one decimal place, with the percentage changes being calculated from the rounded index numbers. Index numbers for periods longer than a single quarter (e.g. for financial years) are calculated as the simple arithmetic average of the relevant rounded quarterly index numbers. The conversion factors described above are applied to the rounded index numbers. A consequence of re-referencing price indexes can be that period-to-period percentage changes may differ slightly to those previously published due to rounding and the re-referencing. These differences do not constitute a revision.

11 It should be noted that a different conversion factor will apply for each index series. For example the conversion factor for the Import price Index Food and live animals will differ from the factor for the Import Price Index Beverages and tobacco. Similarly, the conversion factor for the Export price Index Food and live animals will differ from the factor for the Export Price Index Beverages and tobacco. Conversion factors for converting to the new index reference period are provided in 'Table 20 – ITPIs conversion factors, from index reference period 1989–90 to 2011–12' available as a data cube on the 'Downloads' tab of this product.

12 For further information, contact the National Information and Referral Service on 1300 135 070. The ABS provides further information on re-referencing in *Producer and International Trade Price Indexes: Concepts, Sources and Methods, 2006* (cat. no. 6429.0) and Frequently Asked Questions available at <http://www.abs.gov.au>.

FOR MORE INFORMATION . . .

INTERNET **www.abs.gov.au** the ABS website is the best place for data from our publications and information about the ABS.

INFORMATION AND REFERRAL SERVICE

Our consultants can help you access the full range of information published by the ABS that is available free of charge from our website. Information tailored to your needs can also be requested as a 'user pays' service. Specialists are on hand to help you with analytical or methodological advice.

PHONE 1300 135 070

EMAIL client.services@abs.gov.au

FAX 1300 135 211

POST Client Services, ABS, GPO Box 796, Sydney NSW 2001

FREE ACCESS TO STATISTICS

All statistics on the ABS website can be downloaded free of charge.

WEB ADDRESS www.abs.gov.au